

Opening in June / July 2009

There is a hive of activity happening at Middlemore and the Manukau SuperClinic. The following Services / Departments will be opening in June / July 2009:

Opening in June 2009

4 June Referral & Appointment Centre (Building B, Level 1) - Manukau SuperClinic	8 June Women's Health Module (Building A, Level 1) - Manukau SuperClinic	10 June Medical Ward (East Wing) - Level 3 Edmund Hillary Block	15 June Ophthalmology (Building A, Ground Floor) - Manukau SuperClinic
15 June Café and Conference Centre (Building A, Ground Floor) - Manukau SuperClinic	17 June Cardiac Investigation Unit (Level 1) - Edmund Hillary Block	24 June General Surgery Ward (North Wing) Level 4 - Edmund Hillary Block A Floor General Surgery will move to the Nth Wing	

Opening in July 2009

10 July Medical Ward (North Wing) Level 3 - Edmund Hillary Block	20 July General Surgery Ward (East Wing) Level 4 - Edmund Hillary Block		
Ward 5 will move to the North Wing			

Completion of First Stage Edmund Hillary Block June 2009



From June 2009 - June 2010 Clinical Departments and Services will gradually move into the new Edmund Hillary Block - a six storey building connected to the current Adult Medical Centre (AMC).

Completion of STAGE 1 in June 2009 will include the OPENING of Levels 1, 3 and 4. Moving to the Edmund Hillary Block will be the Cardiac Investigation Unit (CIU) to Level 1, Ward 5 (Medical) to Level 3 and A Floor General Surgery to Level 4. Levels 3 and 4 will have a total of 60 beds (per level) spanning across both wings of the new building. This will allow the 'flexing' of bed spaces resulting in improved efficiencies across the floor, rather than having two separate wings functioning independently.

Long Term - 2010

In July 2010 Plastics and MHSOP (Mental Health Services for Older People) will occupy Level 5 of the Edmund Hillary Block. General Surgery, Internal Medicine and Gastroenterology will occupy Levels 2-4, while Haematology and CIU will occupy Level 1. Allied Health (Social Work, Occupational Therapy and Physiotherapy) will be located on the Ground Floor, along with the cafeteria.

Each Level of the Edmund Hillary Block Medical Centre, improving the flow of staff Access to the Edmund Hillary Building will

will have a direct link to the Adult and patients between buildings. be via the Rainbow Corridor.

Construction of Edmund Hillary Block

Opening June / July 2009

Manukau SuperClinic

Two new buildings (A and B) are nearing completion at the back of the SuperClinic. These buildings will be joined to the SuperClinic via a new Atrium. In June 2009 Buildings A and B will be occupied by:



Construction of Buildings A & B

NEW Women's Health Module:

Building A, Level 1

The new module will have an additional colposcopy and recovery area with a dedicated office space for senior nursing staff.

NEW Ophthalmology Module:

Building A, Ground Floor

The new building will help accommodate the growing number of patients requiring access to the Ophthalmology (eye) Outpatient Department. The additional space will result in a greater number of vision lanes (allowing more patients to be assessed), a procedure room (resulting in more theatre time allocated for more complex procedures), a recovery room, an education area and larger waiting area.

NEW Referrals & Appointment Centre:

Building B, Level 1

The new Centre will provide additional space allowing the team to work together in the same location.

New Staff Café and Conference Centre:

Building B, Ground Floor

The 4 new conference rooms vary in size and will be wired for ceiling mounted data shows, with future capacity for tele-conference facilities.

The staff Café will be larger than the current one with access to an outdoor landscaped area.



Coming together

A significant milestone is taking place on the Middlemore site, as the new Edmund Hillary Block joins the existing Adult Medical Centre (AMC).

With the addition of the Edmund Hillary Block and linking corridors, staff and patients will have seamless access across the buildings.

The links between Levels 1, 3 and 4 will open in June 2009, while the other floors (i.e. Basement, Ground, Levels 2 and 5) will be locked off to enable construction to continue.

“It’s a complex job, connecting a new building to an existing one,” says Fletchers Project Manager Chris Tuxford.

“For example structural and building services engineers need to ensure that essential services such as water, power, sewerage, data and medical gases, connected to the AMC are not disrupted.

“They also need to make provision for the continuity of other services such as heating, lighting and ventilation. Drainage and seismic requirements are also being taken into account.”

RCP Project Manager Umesh Daya says contractors, architects and engineers are working with hospital staff to try to minimise the impact of noise, dust and vibration that are caused by the construction works.



The Edmund Hillary Block joins the AMC

Fire and infection control regulations are also key considerations, along with patient privacy.

“There is a lot of activity going on behind the hoarded off barriers, but we’re confident that this major piece of work will be an exciting introduction to the Middlemore Campus once construction is complete,” Mr Daya says.

Extensive planning is taking place with hospital staff through user groups. For further information contact Umesh Daya on extension 2290.

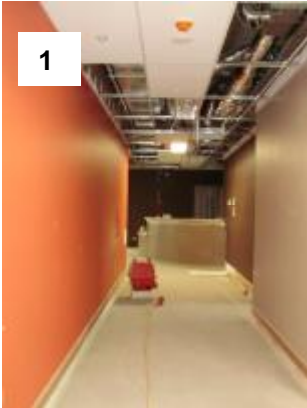
Did you know there is enough concrete in the Edmund Hillary Block to fill two Olympic sized swimming pools (4,600 cubic meters).

Likewise, the data and electrical cables required for just two and a half floors could do 1,940 laps of an Olympic sized pool (97km).

Construction page - Edmund Hillary Block

Levels 1, 3 and 4 of the Edmund Hillary Block are nearing completion and will open June/July 2009

Level 1: Cardiac Investigation Unit (CIU)



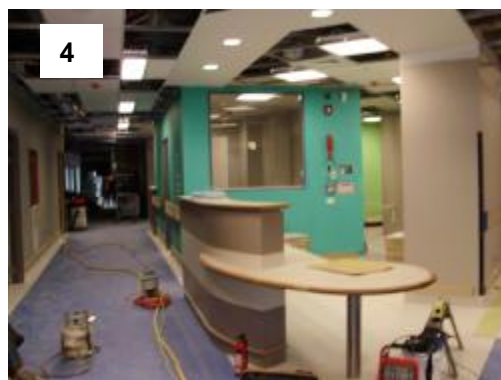
- 1. CIU Corridor
- 2. Work Room
- 3. Reception
- 4. Pacemaker Room



Level 3 (Medical) and 4 (Surgical) *The design of both Levels is identical*



- 1. 2 Bedded Room
- 2. Ward Corridor
- 3. Reception
- 4. Nurses Station



Opening of TADU (currently known as DOSA)

Exciting changes are ahead for DOSA (Day of Surgery Admissions).

This involves a name change to TADU (Theatre Admission and Discharge Unit) and a move to the old ICU (opposite theatre on Level 1 of the Galbraith Building).

The new Unit will open on Monday 11 May 2009.

The new TADU is 3 times the size of the existing DOSA with large open spaces, staff friendly working areas, a separate waiting room, pre-op and recovery area, procedure room and consult/treatment rooms, that can be used as flexi spaces. The 2nd stage area (pictured below) will have 3 bed spaces and 8-10 chairs.



2ND Stage Area

“All of the staff are looking forward to moving in,” says Catherine Larsen, Team Leader TADU.

“It’s a welcome change from our existing department which is cramped and totally inadequate for the increasing number of patients coming through the Unit.



Refurbishment of the old ICU

“The additional space will enable us to continue to provide high quality care and extend the services we can offer.”

Catherine says the TADU team are looking forward to working with staff throughout the organisation.

“Please remember if your patient does not need to be pre-admitted to a bed preoperatively they can enter Theatre via TADU,” says Catherine.

The refurbishment of TADU includes:

- **Construction of new walls to create more consultation space**
- **New Procedure Room**
- **Fresh paint on the walls**
- **New ceiling (in some areas)**
- **Separate Waiting and Pre-op areas**
- **More capacity for Post-op patients**
- **Flexible office spaces**

New RENAL UNIT up and running at Manukau Surgery Centre

CMDHB was delighted to formally bless and open the new Renal Unit on Thursday 19 February 2009.

The facility has been named the Rito Unit. (*Rito is commonly known as the centre part or heart of a flax bush*).

The Blessing included a walk through of the Unit led by Elders and distinguished guests.

Key speakers included CMDHB Chairman Professor Gregor Coster, CEO Mr Geraint Martin, Renal Clinical Head Mr Mark Marshall, a renal patient Mr Richard Wharemate, and Nora Van der Schrieck Manager/Executive Director, Auckland District Kidney Society

The Opening was officiated by the Hon. Tony Ryall, Minister of Health.

The first day of service delivery was Monday 23 February, with 26 patients being treated at the first morning session, 27 patients (28 being the full complement for the unit) on the afternoon session.



From Left to Right: CMDHB CEO Geraint Martin, CMDHB Chairman Professor Gregor Coster, Minister of Health Hon. Tony Ryall, Kaumatua Ngarau Tupaea - Whiskey and Richard Harris



Prayers being offered during the Blessing

Rito Unit - Tapa Cloth

Pauline Telfer – Rito Charge Nurse was presented a Tapa Cloth by Ola Otuafi – a staff member from Tonga. The large tapa is made by a group of people and symbolises the hard work and collaboration required to produce these pieces .

Pauline graciously donated this to the Rito Unit, where it is displayed to great effect in the entranceway.



The Tapa cloth takes pride of place by the entrance of the Rito Unit

Rito Unit – The Move: By Pauline Telfer – Charge Nurse, Rito Unit

The move to the new Rito Unit at the Manukau Surgery Centre will enable staff to provide care for our 120 patients in a supported and safe environment.

We are especially proud to be working in a facility that is the biggest haemodialysis unit in New Zealand and the biggest water treatment plant in Australasia.

The staff are enjoying the additional space and are becoming familiar with new equipment and new routine. The flow of the day is much smoother allowing us more time with our patients.

The first week was pretty crazy as staff and patients settled into the new Unit. The first few days were spent running around looking for things and trying to orientate ourselves to our new environment.

Some patients were a little grumpy at starting dialysis later than usual but were reminded that it would take a couple of weeks for things to settle down.

This is the end of our second month and the staff have done an awesome job!

We have adjusted the daily operational management to suit our needs, through the feedback of both staff and patients. The initial teething problems have almost been resolved and we are all very happy with the end result.



Testing out the new Renal chair are (From Left to Right:) CMDHB Chairman Gregor Coster, Hon. Health Minister Tony Ryall and CMDHB CEO Geraint Martin.

I would like to extend a big thank you to all of my staff for their input and help in creating a great place to work in and for patients to receive dialysis.

INTERESTING INFO

The Renal Unit moved into its new area on 19 February 2009. The staff have settled in well and the area looks like it has always been part of the site.

The staff from the Western campus were orientated to the Manukau Site regarding staff café, parking and security. They were also given training for emergency response and fire evacuation.

Manukau Surgery Centre staff have welcomed their new neighbours and have shared some helpful tips for the area with the new staff.

Update Buildings A, B and C – Manukau SuperClinic

Good progress continues on the construction of the three adjoining buildings at the back of the SuperClinic.

The exterior of Building A is complete and the installation of services, gib fixing and painting is underway.

Building A will include Ophthalmology on the Ground Floor and Women's Health on Level 1.

The Interior fit-out is also progressing in Building B.

Building B will include a new Staff Café and Conference Centre on the Ground Floor with Referrals and Appointments on Level 1.

The Atrium (Building C) is also starting to take shape, with the roofing complete, the skylight fitted and glazed, and the interior finishing progressing.

Opening dates for the new areas are:

- 4 June: Referrals & Appointments
- 8 June: Women's Health
- 15 June: Ophthalmology
- 15 June: Conference Centre and Staff Café

Once Buildings A and B are occupied work will begin on the refurbishment of a number of the existing clinics on Level 1 of the Manukau SuperClinic, General Medicine, Breast Screening and Hands Therapy.



Building A - with the scaffolding recently removed



Building A - interior fit out progressing



Atrium Extension – construction progressing

New High Dependency Unit (HDU) up and running

Middlemore Hospital's new High Dependency Unit (HDU) was officially opened on 19 March 2009 by His Worship the Mayor Len Brown and Senior Vice President of Fisher and Paykel Healthcare, Lewis Gradon.

Fisher & Paykel Healthcare were a major supporter of the new Critical Care Complex, donating an amazing \$1.2 million to the project.

Also present at the opening were other key sponsors, Peter Leitch, Chairman of The Mad Butcher and Suburban Newspapers Trust, and Ruth Krippner, Chairperson of the Fresh Future Charitable Trust.

We are so grateful to these and all our donors, with whose support were able to open such a fantastic facility.

With six beds the unit will provide patients with a level of care that falls between the general ward level and the Intensive Care Unit. In the long term i.e. from 2012 an 18 bed HDU will be located within the proposed new Clinical Services Block.

Counties Manukau District Health Board CEO Geraint Martin says he's delighted with the new facility. "Our community needs and deserves world-class facilities, so it's a very proud day for the hospital," he says.

The unit cost more than \$1 million to build and is located next to the Intensive Care Unit (ICU).

ICU Clinical Director Catherine Simpson says medical staff at Middlemore had wanted the unit for more than a decade and it will have a massive impact on the hospital.



From Left to Right: Lewis Gradon (Fisher & Paykel) and Manukau Mayor Len Brown cut the ribbon for the new HDU.

"It will be very beneficial to our patients who are too sick for a ward but not sick enough for Intensive Care. Now everyone will be getting everything that they need and we expect around 700 patients will be seen in the first 12 months."

The Unit will admit patients directly from emergency care and from the wards and will include intensive care patients who are well enough but not ready for ward level care.

The ratio will be one nurse to every two beds and the average length of stay for patients will be around two days.

"Because it is a High Dependency Unit we will attract highly skilled and passionate nurses," says Catherine.

"Many thanks to everyone involved in getting the unit up and running. We are just so pleased to be able to provide the care that people in the Manukau community deserve."

New HDU worth waiting for by Debbie Minton, Nurse Manager Critical Care Complex

The Critical Care Complex is very proud to announce the opening of the HDU.

Years of planning and 6 months dedicated work from Associate Charge Nurse Managers Tania Wood & Natasha Rudkin-Wilson, the Critical Care Complex and Project management team, saw the HDU receive its first patient on 24 March 2009.

Since then we have treated a wide range of patients from many departments within the hospital.

It's been a busy and exciting few weeks leading up to the Blessing and 'Grand Opening' of the new Unit by his Worship the Mayor Len Brown.

Many thanks to all of our sponsors, who without their generosity we would not have been able to provide such an amazing facility for our staff and patients.

To open the HDU we have employed 15fte (full time equivalent) registered nurses, 4 HCA's (Health Care Assistants), 2 ward clerks and 2 House Officers.

The nursing staff were all employed from within CMDHB and were given a 2 week orientation programme, utilising many specialists from around the hospital for the teaching programme.

They have been given a very structured 3 month orientation package and are being supported through this by Sunetra Chand our workforce development coordinator, Alison Pirrett, Nurse Practitioner and Jenny Wilson, Acting Nurse Educator.



From Left to Right: Debbie Minton, Tania Wood and Natasha Rudkin-Wilson

Andrew Gilhooly and Richard Sihamau are providing vital senior nursing support to Tania and Natasha in the training of the team and the safe efficient running of the Department.

The energy and enthusiasm within the department is amazing. People have come together as a cohesive team very quickly and will make a real difference to positive, timely outcomes for the patients requiring our support within Middlemore Hospital.

Coming soon

Check out the new logo for the Critical Care Complex (ICU and HDU). This will be launched shortly so watch this space for further details.



Buckland Road Dental Clinic leaves its mark in South Auckland

Since opening its doors in January 2009 the Buckland Road Dental Clinic has been busy providing oral health care to the people of South Auckland.

Three health providers work within the clinic. These include ARDS (Auckland Regional Dental Services) providing Dental Services for Pre School Children, students of Southern Cross Campus up to year 8 and students of eight other schools, ADHB (Auckland District Health Board) providing relief of pain for adults four days a week and medically compromised adults on Thursday afternoons and AUT (Auckland University Technology) hygiene students due to start shortly. These students will offer services to the older students of the Southern Cross Campus.

ARDS have been especially busy since the new clinic opened. Over the past 3 months the Service has examined 1194 patients, carried out 3179 treatments and given the all clear to 1047 patients who don't need to come back for either 6,12 or 18 months.

“Our busiest time seems to be in the school holidays,” says ARDS Clinical Team Leader Debbie Rowley.

“This makes it easier for the whole family to attend and provides us with a great opportunity to instil some good dental health messages. Many of these



Photo provided by ARDS

families have also commented on what a great facility the clinic is. They especially like the space between each dental chair providing privacy for the patient, parent and therapist.

“As for the staff, we all enjoy how roomy and bright the clinic is. My dental assistants feel very privileged to work here. They like the reception area sterilization room and radiography room, where they spend a lot of time.

“I personally look forward to everyday and whatever challenges come my way, especially because the environment is so nice to work in,” says Debbie.

Did you know that the Buckland Road Community Dental Clinic is the first of a series of community based oral health hubs for Counties Manukau.

This will enable children aged 0 to 17 years to access oral health services from a hub clinic, rather than the current separate dental services for preschool, primary and secondary schools.

Tui Ward returns home to Tiaho Mai

The upgrade of Tui Ward (Tiaho Mai) is complete and on Thursday 2 April 2009 Tui staff and service users moved back to Tiaho Mai.

“All of the staff have been looking forward to moving back,” says Tui Charge Nurse Fiona Bell. “We’re especially delighted with the additional space, which means individual bedrooms and ensuites for all of our service users, increasing their privacy and dignity.



The expanded Tui Ward



Reception to Dining Room

“There is also a dedicated sensory room which is supported by Te Pou, (the national centre for mental health research, information and workforce development) as part of a national pilot. This space can be used by people to develop techniques that help them to relax and self sooth. Research has also shown that a sensory room can also reduce the incidents of seclusion and restraint.”

Mental Health Service Manager Deborah Barrow says the refurbished ward will make it easier for staff to provide continuity of care and ensure that people are supported by the same staff team throughout their journey of recovery. “Now that the refurbishment is complete we can return to strengthening the links with community mental health teams across the whole unit, ensuring that a person’s journey throughout the inpatient unit is seamless,” says Deborah Barrow.



14 bed corridor

“We are also focussing on a number of initiatives which will improve people’s experience of the service. These include consolidation of the primary nursing model, ensuring the multidisciplinary teams are person and goal centred and that the service is able to provide a therapeutic environment that supports peoples discharge to the community.”

RCP Project Manager Umesh Daya says the refurbishment of Tiaho Mai was an enjoyable and challenging project to be apart of. “Carrying out building works around operating wards can be a challenge and I’d like to thank all of the staff for their patience and support,” says Umesh.



Contact

Communications Coordinator

Janet Haley

TOWARDS 20.20

Counties Manukau District Health Board.

C/- Projects Office, Building 25

Private Bag 94052

South Auckland Mail Centre

Auckland

Ph: (09) 262-9500

Fax: (09) 270 9714

Mobile: 021 443 731

Email: haleyj@middlemore.co.nz

Web: www.cmdhb.org.nz

Towards 20/20 Web Site

In the internet explorer address bar type:
<http://www.cmdhb.org.nz>

Click onto Towards 20/20.

The Towards 20/20 web site has been designed to inform staff about the modernisation and redevelopment projects occurring across the CMDHB sites.

You'll find background information and regular updates on the various projects, along with updated photographs of construction activities, floor plans, copies of Towards 20/20 NEWS and much more.

Migration planning in full swing

A series of moves will take place at the Manukau SuperClinic and Middlemore Hospital from June 2009 and detailed move planning is now underway.

Natalie Pointon of B&W Consulting will lead the planning for the clinical areas, which include TADU (currently known as DOSA), Biomedical, Ophthalmology, Women's Health, new Wards and the Cardiac Investigation Unit with Annette Holt leading the planning for non clinical areas, which include Referral and Appointment Centre, Café and Conference Centre as well as providing back-up for Natalie.

All the moves will be managed in a consistent way and Move Coordinators (i.e. the lead person in each service/department relocating or starting up) will be lead through the tasks they are responsible for, ensuring that there



From Left to Right: Natalie Pointon and Annette Holt

is minimal disruption to service continuity before, during and after the moves.

If you have any queries, please do not hesitate to contact Natalie Pointon on extension 2034 or Annette Holt on extension 2116.